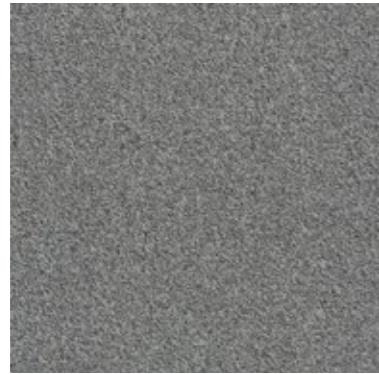


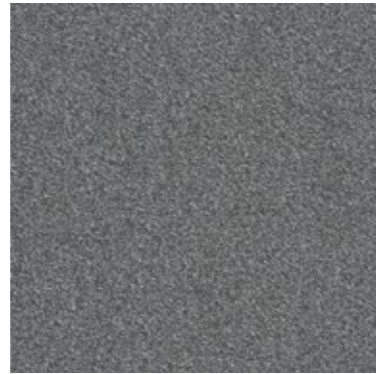
100%  
Recycled  
Nylon

# Biosfera - Boucle

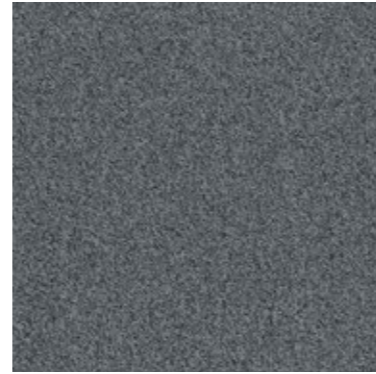
Interface®



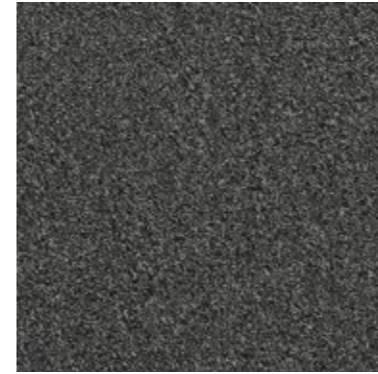
7181 Bianco Christal



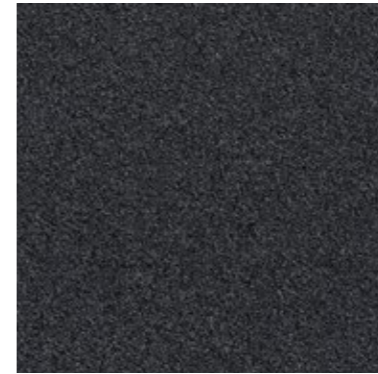
7182 Bardiglio



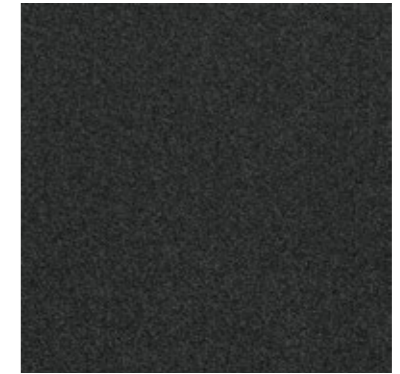
7183 Mundo



7184 Polaris



7185 Nero Ebano



7186 Nero Impala



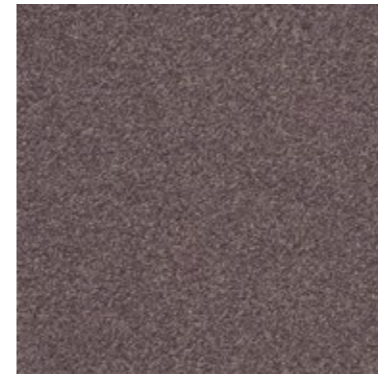
7871 Paglia



7872 Orco Brasil



7873 Nero Angola



7875 Ambra



7876 Amethysta



7878 Amaretto



7879 Occhio di Tigre



7880 Travertino Noce



7881 Ferro Rosso



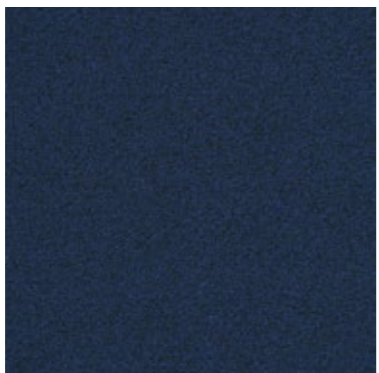
7882 Rubino



7883 Granato



7886 Zaffiro



7887 Lapislazulo



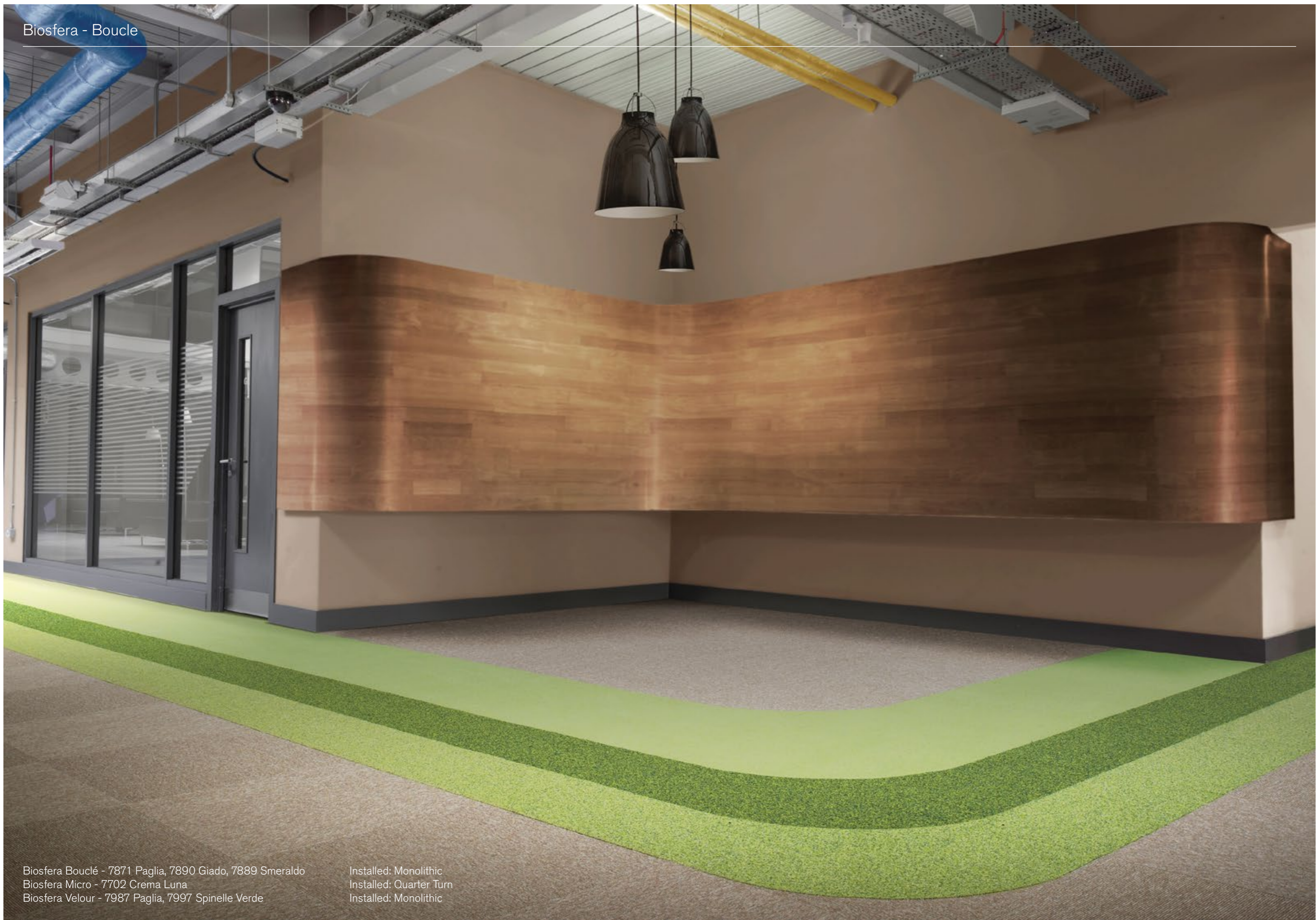
7889 Smeraldo



7890 Giado



7891 Chiara di Luna





7183 Mundo, 7882 Rubino, 7883 Granato, 7886 Zaffiro,  
7891 Chiara Di Luna, 7889 Smeraldo, 7890 Giado

Installed: Monolithic



7181 Bianco Christal, 7182Bardiglio, 7183 Mundo

Installed: Monolithic

<b>Product Definition</b>	Tufted Level Loop Pile Tile
Konstruktion	Getuftete Schlingenqualität
Descripción	Moqueta modular tufting bucle
Description	Dalle de moquette à velours tufté bouclé
Type	Getufte bouclé
Descrizione	Bouclé tufted piano

<b>Pile Material</b>	100% Recycled BCF Solution Dyed Nylon contains pre and postconsumer recycled content
Polfasermaterial	100% recyceltes Polyamid, enthält Anteile pre- und post-consumer recycelten Materials
Composición Fibra	100% Poliamida reciclada BCF tintada en masa con contenido reciclado pre y post consumo
Composition	Fibre polyamide BCF 100% recyclée teint en masse, contenant des éléments recyclés pré et post consommation
Poolmateriaal	100% gerecycled Solution Dyed Polyamide BCF, bevat 100% pre- en post-consumer gerecycled content
Fibra	100% Poliammide BCF riciclata tinta in massa con contenuto riciclato pre- e post-consumer

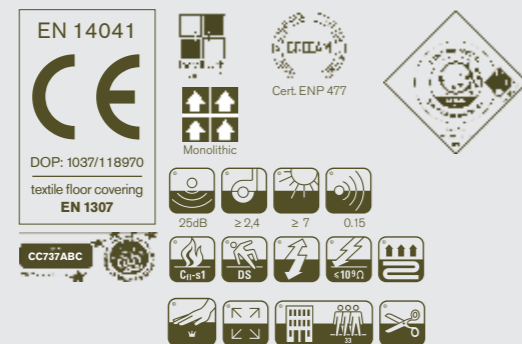
<b>Pile Yarn Weight</b> / Poleinsatzgewicht / Peso Fibra / Poids de fibre / Poolinzetgewicht / Peso Felpa	530g/m <sup>2</sup> ± 5%
<b>Effective pile yarn weight</b> / Polschichtgewicht / Peso útil de fibra / Poids de fibre utile / Effectief poolgewicht / Peso felpa effettivo	340g/m <sup>2</sup> ± 10%
<b>Total Weight</b> / Gesamtgewicht / Peso Total Poids total / Totaalgewicht / Peso Totale	4190g/m <sup>2</sup> ± 5%
<b>Pile Height</b> / Polschichtdicke / Altura Fibra / Hauteur de la fibre / Poolhoogte / Altezza Felpa	2,4 mm ± 0,3 mm
<b>Total Thickness</b> / Gesamtdicke / Espesor Total / Epaisseur totale / Totale dikte / Altezza Totale	5,6 mm ± 0,3 mm
<b>Gauge/Ends 10 cm</b> / Teilung x 10 cm / Galga x 10 cm / Jauge-Rangs par 10 cm / Rijen per 10 cm / Serraggio x 10 cm	1/10 – 39.4
<b>Tufts per m<sup>2</sup></b> / Noppenzahl/m <sup>2</sup> / Puntadas m <sup>2</sup> / Densité du tuft par m <sup>2</sup> / Aantal noppen per m <sup>2</sup> / Densità Punti	164,000 ± 7,5%
<b>Backing Type</b> / Rückenkonstruktion / Soporte / Sous-couche / Ruguitvoering / Sottofondo	Graphlex®
<b>Wear Classification</b> / Beanspruchungsklasse / Clasificación al tráfico / Classement Gebruiksintensiteit / Resistenza all'usura	Heavy Contract (EN 1307) Class 33 / LC1

<b>Style</b>	60718
5m <sup>2</sup> - 20 tiles per box (50 x 50 cm ± 0,2%)	

<b>Radiant Panel</b> / Schwerentflammbarkeit / Hot Metal Nut	(EN ISO 9239/1) Euroclass Cfl s1 (EN ISO 13501) Pass, low radius of effects of ignition (BS 4790)
--	---

<b>Dimensional Stability</b> / Dimensionsstabilität / Estabilidad Dimensional / Stabilité dimensionnelle / Dimensionele stabiliteit / Test Stabilità dimensionale	≤ 0,2% (ISO 2551/EN 986)
---	--------------------------

<b>Sound Absorption</b>					
<b>125Hz</b>	<b>250Hz</b>	<b>500Hz</b>	<b>1000Hz</b>	<b>2000Hz</b>	<b>4000Hz</b>
0.00	0.03	0.04	0.13	0.27	0.33



## Light Value

Product	Colour No	Colour Name	L Value*	Y Value*
<b>Biosfera Boucle</b>	7181	Bianco Cristal	50.4	18.7
	7182	Bardiglio	38.7	10.5
	7183	Mundo	32.6	7.4
	7184	Polaris	32.1	7.1
	7185	Nero Ebano	24.3	4.2
	7186	Nero Impala	20.1	3.0
	7871	Paglia	54.3	22.2
	7872	Orco Brasil	30.1	6.3
	7873	Nero Angola	25.5	4.6
	7875	Ambra	29.1	5.9
	7876	Amethysta	22.4	3.6
	7878	Amaretto	50.1	18.5
	7879	Occhio di Tigre	39.9	11.2
	7880	Travestino Noce	22.7	3.7
	7881	Ferro Rosso	34.2	8.1
	7882	Rubino	36.0	9.0
	7883	Granato	30.0	6.3
	7886	Zaffiro	23.9	4.1
	7887	Lapislazulo	20.8	3.2
	7889	Smeraldo	44.5	14.2
7890	Giado	34.3	8.1	
7891	Chiara dei Luna	29.8	6.2	

\* **Light Value:** L Value = L according to CIE L\*a\*b\* colour space, Y Value = Light Reflectance Value according to BS 8493

**Lichtreflexionswerte:** L-Wert = L gemäß CIE L\*a\*b\* Farbspektrum, Y-Wert = Lichtreflexionswert gemäß British Standard BS 8493

**Valores de Reflectancia de Luz:** Valor L = L según CIE L\*a\*b\* espacio de color, Valor Y = Valor de reflectancia de luz según el estándar británico BS 8493

**Valeurs concernant la lumière:** Valeur L = L faisant référence à la méthode CIE L\*a\*b\* pour la couleur, Valeur Y = Valeurs de réflectance de la lumière selon le British Standard BS 8493

**Licht waarden:** L Waarde = L volgens CIE L\*a\*b\*kleurruimte, Y Waarde = Licht Reflectie Waarde volgens BS 8493

**Indici di riflettanza alla luce:** Indice L = L secondo CIE L\*a\*b\* colour space, Indice Y = Indice di riflettanza alla luce secondo la norma BS 8493

# Environmental Data Sheet

Construction			
Yarn system	100% BCF Solution Dyed PA 6		
Backing system	Graphlex®		
Recycled Content	Total Recycled Content	Pré consumer recycled content	Post consumer recycled content
Product average	<b>69,35%</b>	63,03%	6,31%
Yarn average	<b>100,00%</b>	50,00%	50,00%
Recycled content can be subject to differences between colours. See details for individual colours on next page.			
Carbon Footprint			
Global Warming Potential (kgs CO2 equivalents/sq meter)			
Full life-cycle carbon footprint (following our EPD results or EPD calculation method)	Raw materials and Production:	6.19 kg CO <sub>2</sub> eq./m <sup>2</sup>	
	Delivery and installation:	0.63 kg CO <sub>2</sub> eq./m <sup>2</sup>	
	Use (10 years):	2.85 kg CO <sub>2</sub> eq./m <sup>2</sup>	
	End of life (Waste to Energy)	7.90 kg CO <sub>2</sub> eq./m <sup>2</sup>	
	<b>TOTAL</b>	<b>17.57 kg CO<sub>2</sub> eq./m<sup>2</sup></b>	
CO <sub>2</sub> compensation	Carbon neutral Cool Carpet® is Standard		
Manufacturing			
Location	Scherpenzeel, NL Factory is certified ISO 14001 since 1996 and ISO 9001 since 1990		
Installation Impacts			
TacTiles™	Optimised for glue-free installation with TacTiles™ connectors with virtually zero VOCs included as standard		
Installation Waste	In a typical installation* using the installation method below:		
	Quarter turn – 3-4% installation waste		
	Monolithic - 3-4% installation waste		
	For reference: 2 metre wide broadloom typically generates 7-10 % installation waste		
* In a rectangular building, installed before walls.			
End-of-life			
Alternatives to landfill	Reuse: Can be cleaned and reused in a non-critical location to extend its useful life		
	Recycling: Can be returned through the Interface ReEntry scheme and be re-used as raw material in new carpet tiles		
	Waste-to-Energy: Can be incinerated in appropriate waste to energy plant		
Indoor Air Quality			
GUT (Gemeinschaft umweltfreundlicher Teppichboden)	The product passes all requirements of GUT's testing criteria regarding hazardous substances, emissions and odour. GUT PRODIS Certificate no. CC737ABC		
CRI (Carpet & Rug Institute)	Compliant to LEED IQ 4.3 credit (tested in Eurofins to the equivalent test of the CRI Green Label Plus)		
Compliance to Green Building Schemes			
See next page to check how our products contribute to the main green building certification schemes (BREEAM, LEED, HQE and DGNB)			
Type III Environmental Product Declaration			
EPD according to ISO 14025	This product has a type III Environmental Product Declaration, <a href="#">EPD-IFF-2012831-E</a>		

Recycled content – colour level						
Colourway	Total recycled content %	Total pre consumer recycled content %	Total post consumer recycled content %	Yarn recycled content %	Yarn pre consumer recycled content %	Yarn post consumer recycled content %
7181 Bianca Christal	71,42%	65,11%	6,31%	100,00%	50,00%	50,00%
7182 Bardiglio	71,42%	65,11%	6,31%	100,00%	50,00%	50,00%
7183 Mundo	71,42%	65,11%	6,31%	100,00%	50,00%	50,00%
7184 Polaris	71,42%	65,11%	6,31%	100,00%	50,00%	50,00%
7185 Nero Ebano	71,42%	65,11%	6,31%	100,00%	50,00%	50,00%
7186 Nero Impala	71,42%	65,11%	6,31%	100,00%	50,00%	50,00%
7871 Paglia	62,29%	55,98%	6,31%	100,00%	50,00%	50,00%
7872 Orco Brasil	71,42%	65,11%	6,31%	100,00%	50,00%	50,00%
7873 Nero Angola	71,42%	65,11%	6,31%	100,00%	50,00%	50,00%
7875 Ambra	71,42%	65,11%	6,31%	100,00%	50,00%	50,00%
7876 Amethysta	71,42%	65,11%	6,31%	100,00%	50,00%	50,00%
7878 Amaretto	62,29%	55,98%	6,31%	100,00%	50,00%	50,00%
7879 Occhio Di Tigre	71,42%	65,11%	6,31%	100,00%	50,00%	50,00%
7880 Travertino Noce	71,42%	65,11%	6,31%	100,00%	50,00%	50,00%
7881 Ferro Rosso	62,29%	55,98%	6,31%	100,00%	50,00%	50,00%
7882 Rubino	62,29%	55,98%	6,31%	100,00%	50,00%	50,00%
7883 Granato	71,42%	65,11%	6,31%	100,00%	50,00%	50,00%
7886 Zaffiro	71,42%	65,11%	6,31%	100,00%	50,00%	50,00%
7887 Lapislazulo	71,42%	65,11%	6,31%	100,00%	50,00%	50,00%
7889 Smeraldo	62,29%	55,98%	6,31%	100,00%	50,00%	50,00%
7890 Giado	71,42%	65,11%	6,31%	100,00%	50,00%	50,00%
7891 Chiara Di Luna	71,42%	65,11%	6,31%	100,00%	50,00%	50,00%

THIS DATA CAN BE USED TO COMPARE CARPET PRODUCTS WITHIN THE INTERFACE PORTFOLIO. COMPARISON WITH OTHER PRODUCTS WOULD REQUIRE USE OF SAME METHODOLOGIES.  
Interface reserves the right to change or modify any information included on the Environmental Data Sheet. Information updated 14th February 2013.

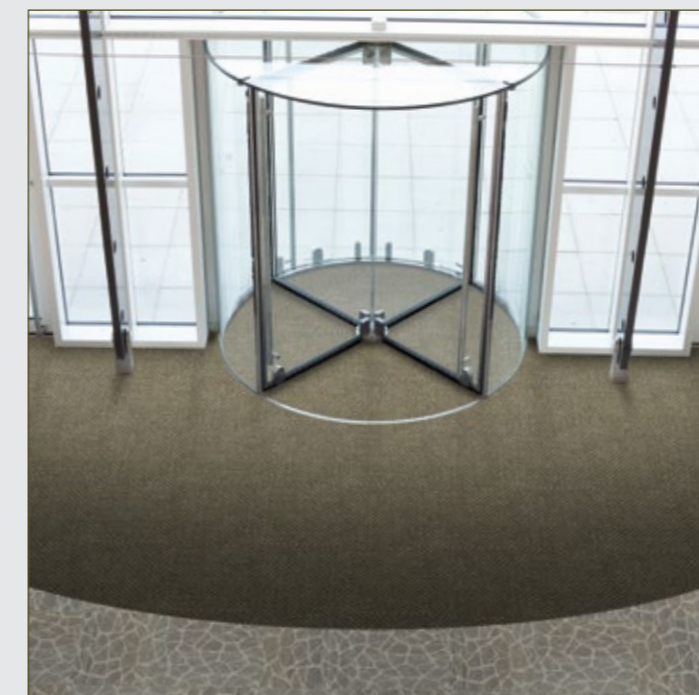
**Compliance to Green Building Schemes**

BREEAM (UK and international)	<p><b>BRE Green Guide Ratings:</b>  <b>Office - A+</b>  <b>Education -A+</b>  <b>Health Care - A+</b>  <b>Retail (by fashion) - A+</b></p> <p>Potential contribution to following categories and credits:                  Hea 02 - Indoor air quality – minimising sources of air pollution                  Hea 05 - Acoustic Performance                  Mat 01 - Life Cycle Impacts                  Mat 05 - Designing for robustness                  Wst 01 - Construction Waste Management</p>
LEED 2009 US	<p>Potential direct or indirect contribution to following categories and credits:                  Indoor Environmental Quality                  Credit 4.1 Low Emitting Materials: Adhesive &amp; Sealants                  Credit 4.3 Low Emitting Materials: Carpet Systems                  Materials and Resources                  Credit 2.1 Construction Waste Management                  Credit 4.1 Recycled content                  Credit 5.1 Regional Materials                  Innovation and Design                  Credits 1-4 1 Climate Neutral Products                  Credits 1-4 1 Pilot Credit 43, Certified Products</p>
HQE (FR)	<p>Potential direct or indirect contribution to several points within following targets:                  2. Integrated choice of products and construction materials                  3. Low site nuisance                  9. Acoustic comfort                  10. Visual comfort                  11. No unpleasant smells                  12. Sanitary quality of areas                  13. Sanitary air quality</p>
DGNB (D)	<p>Potential direct or indirect contribution to following criterion                  ENVIRONMENTAL QUALITY                  ENV1.2 Local Environmental Impact                  ECONOMIC QUALITY                  ECO1.1 Building-Related Lifecycle Costs                  ECO2.1 Efficient Use of Space                  SOCIOCULTURAL AND FUNCTIONAL QUALITY                  SOC1.2 Indoor Air Quality                  SOC1.3 Acoustic Comfort                  TECHNICAL QUALITY                  TEC1.5 Ease of Cleaning and Maintenance                  TEC1.6 Ease of Dismantling and Recycling</p>



## TacTiles™

- A smarter, more sustainable way to install carpet tiles
- No need for liquid adhesives
- Fitting tiles is quick, clean and easy and the process virtually eliminates emissions
- No damage to sub floors, and nothing to stop you lifting or moving the carpet whenever you want



## Entrance Matting

Incredibly tough, hard-wearing and practical; indoor entrance matting acts as the first line of defence to any interior by removing almost 100% of dirt, rain and mud before it's walked into your flooring.

Both of the products in our commercial entrance matting range – Barricade and Foyer – are resilient, functional, easy to maintain and stylish. And it's for these reasons that our barrier matting forms an essential part of any maintenance programme needed to keep your floorcovering looking its very best.